

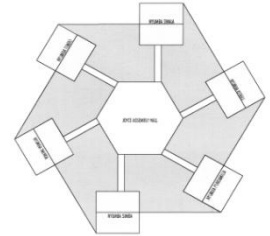
VEREIN - ASSOCIATION

KINDERDORF MBINGU

VILLAGE D'ENFANTS MBINGU

CHILDREN'S VILLAGE MBINGU (ST ELIZABETH ORPHANAGE)

MBINGU REPORT 2026\_03\_08



Hello dear friends of the Mbingu Children's Village

The kids of Mbingu are always in great shape!



Here's the latest news from St. Elizabeth Children's Village (Mbingu):

1. Agnella is working as an animator, and the children are in their element, enjoying the activities



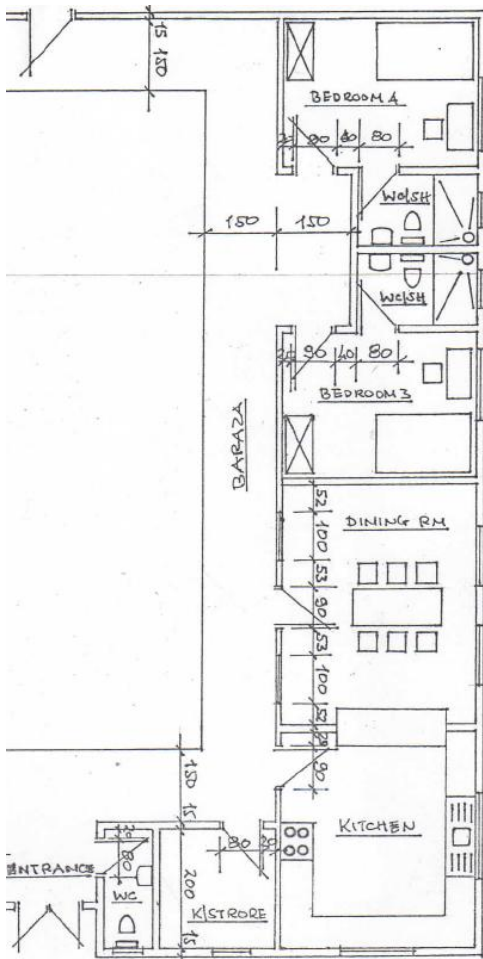
2. Visit from Erfurt by Elisabeth Funk "People with Disabilities" + Monika Schmieder "Caritas Social Worker / Counselor"



3. Mbingu St Elizabeth Home Made cloths



4. The roof and window grilles on one wing of the new convent building are now complete



5. The agricultural land and animal population of the Children's Village currently has the following sizes

<b>Agriculture</b>				<b>Animals</b>	
<b>Farming</b>	ha	Acres			
groundnuts	0.8	2		cows (together 10 litres milk)	12
maize village	2.8	7		pigs	36
maize for animals and chicken	2.0	5		chicken	150
paddy village	2.4	6		goats	51
paddy animals and chicken	0.8	2			
bananas and cocoa mixed	0.8	2			
soya and rosella	0.4	1			
fruits oranges, banana, lemon	0.4	1			
<b>Total</b>	<b>10.4</b>	<b>26</b>			<b>249</b>



Bananas with cocoa plants



Bananas



Groundnuts and paddy field



Groundnut plantation



Ginger



Paddy



Papaya



Oranges

Thank you so much for your kind support of the Children's Village and its residents.

Mbingu Children's Village Association (Mbinguvillage) + Beat Wandeler + Sr Sapientia